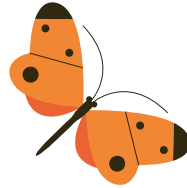


# Auswahl insektenfreundlicher Gehölze und Sträucher

## Gehölze



Feld-Ahorn (*Acer campestre*)



Hainbuche (*Carpinus betulus*)



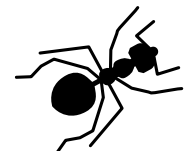
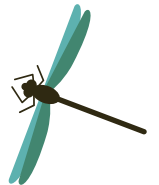
Sandbirke (*Betula pendula*)



Rotbuche (*Fagus sylvatica*)

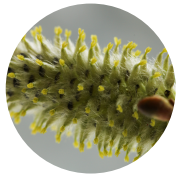
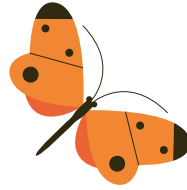


Vogelkirsche (*Prunus avium*)



# Auswahl insektenfreundlicher Gehölze und Sträucher

## Gehölze



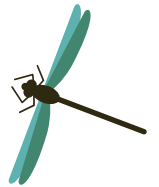
Silberweide (*Salix alba*)



Eberesche (*Sorbus aucuparia*)



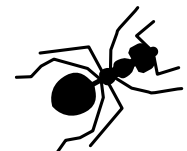
Elsbeere (*Sorbus torminalis*)



Winterlinde (*Tilia cordata*)

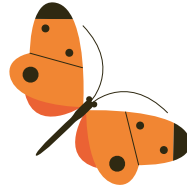


Sommerlinde (*Tilia platyphyllos*)



# Auswahl insektenfreundlicher Gehölze und Sträucher

## Sträucher



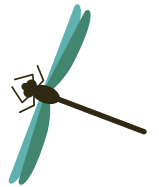
Hasel (*Corylus avellana*)



Weißdorn (*Crataegus spec.*)



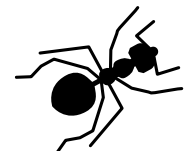
Wein-Rose (*Rosa rubiginosa*)



Schwarzer Holunder (*Sambucus nigra*)



Schwarze Johannisbeere (*Ribes nigrum*)

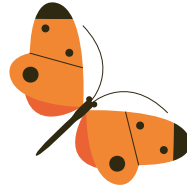


Roter Hartriegel (*Cornus sanguinea*)



# Auswahl insektenfreundlicher Gehölze und Sträucher

## Sträucher



Gewöhnliche Traubenkirsche (*Prunus padus*)



Schlehe (*Prunus spinosa*)



Hundrose (*Rosa canina*)



Ohrweide (*Salix cinerea*)



Korbweide (*Salix viminalis*)

